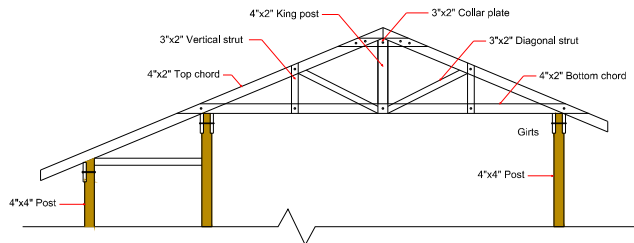
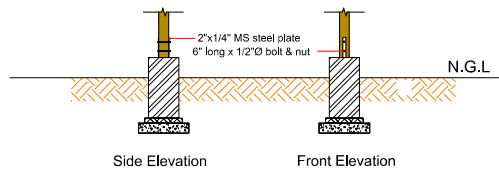


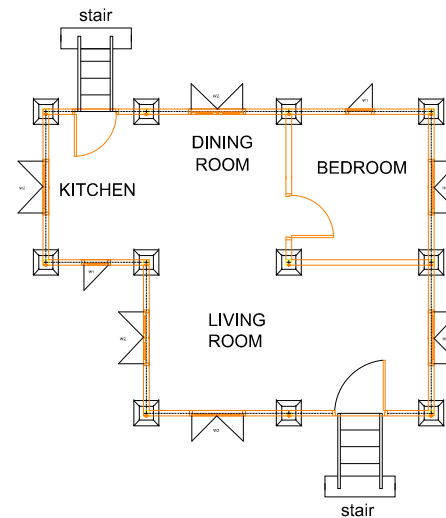
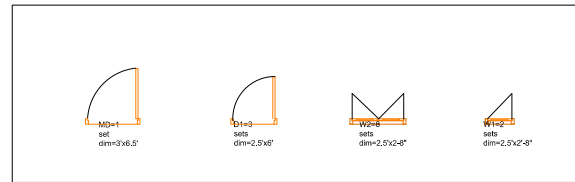
PERMANENT SHELTER DESIGN



TYPICAL ROOF FRAMING DETAIL



FOOTING FOUNDATION DETAIL
1.5' x 1.5' CONCRETE FOOTING



DOOR/WINDOW DETAIL

PS : Permanent Shelter
Floor Area = 306 sq-ft
or 28.44m²

RAKHINE STATE

Specification

Dim: 18' x 17' x 8'
30g cgi roof, ridge piece
timber framing structure
bamboo mat wall
bamboo floor with timber
support
concrete footing
2' to floor from NGL
stair=2 set
timber post-4"x4"

DWG SHEET 4